



# Myionu™ for vehicles – WiFi Hybrid



## Myionu™ for vehicles WiFi Hybrid

Myionu™ Vehicles Next G / WiFi product has the features, expandability, and flexibility with the intelligence to meet all customer's ever changing needs in fleet management. The Myionu™ Vehicles Next G / WiFi offers a full set of features, comprehensive I/O system and expandable accessories that make it an industry leading value proposition. Myionu™ Vehicles Next G / WiFi expandability and flexibility lowers the cost of delivering, supporting, and growing fleet management solutions.



- WiFi is an optional extra

### Key Features

- Lifetime product warranty
- Fully inclusive costs
- Live Tracking
- Optional Wi-Fi Hybrid
- 5 Digital Inputs
- Optional Driver ID
- Optional Temperature Sensors
- Optional Driver Duress
- Web based portal with Google mapping
- Full management reporting
- Geofencing
- Email alerts
- Choice of 3 minute or 1 minute updates
- Next G Coverage
- Driver behaviour
- Impact Sensor

Item	Price Inc GST	
Myionu™ Vehicles Next G /Wi-Fi (Optional)	\$749	
Installation	\$199	
Myionu™ Monthly Service With 3 Minute Updates	\$30	
Myionu™ Monthly Service With 1 Minute Updates	\$35	
Weekly Hardware Rental Option	24 Months	36 Months
Myionu Vehicles Next G / Wi-Fi (optional)	\$10.71	\$8.56

\* Subject to a 24 month contract term. No Contract option available for \$100 opt out fee.

† Lifetime replacement product warranty applies where monthly service fee remain in place and uninterrupted. 12 months standard warranty applies outside of these terms.

Myionu™ uses the very latest in mapping technology to deliver outstanding results every time. Our mapping is powered by Google, with some very clever, advanced features which produce an unrivalled user experience.

## Custom Mapping

In addition to the Google map feed, Myionu™ has the ability to overlay a customer's own mapping images in the form of a KML file.

## Great choice, superb functionality.

Myionu™ delivers a truly unique customer experience driven from superb mapping functionality; take some time to review the features offered.

## Myionu™ satellite view

Myionu™ satellite view uses the latest Google mapping. The detailed satellite mapping shows stunning satellite images of the location - down to street level.

Whilst Google Satellite mapping can be reasonably up to date, we understand that there will be times where only the very latest image will suffice. A good example of this would be a mine site, where the environment is changing on a daily basis. With Myionu™, custom images can be added with ease. Using our portal, customers can create a dynamic link to their very own KML data base to deliver the required images.



## Myionu™ - Hybrid View

Myionu™ hybrid view uses the latest Google mapping. The detailed mapping shows mapping data down to street level (including street name and street number or block number) further information also includes transport locations (for example bus and train stations). The satellite view is interlaced to create this stunning map.



## Myionu™ unique POI

With Myionu™ it is possible to add unique points of interest (POI). The POIs are only viewed by those authorised to log-in to your account; because they are not in the public Domain, Myionu™ has the ability to create bespoke POI groups. Groups can include offices, accident black-spots, Customers; in fact absolutely anything you want. With

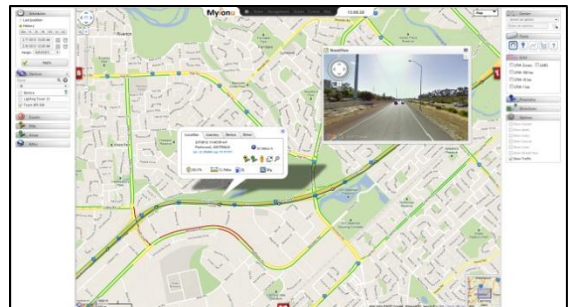


Myionu™ unique POIs, alerts can be raised whenever a device is within a preset distance of a Point of Interest; for example raise alert when 'vehicle A' is within 750 meters of 'Customer B'.

## Myionu™ – Google live traffic flow

### Availability of real-time traffic

Live traffic data is available in major cities in the United States, France, Britain, Australia, and Canada, with new cities and countries frequently added. Traffic conditions are shown based on data availability. If we don't have enough data to calculate accurate traffic speeds for a road, then we won't show traffic conditions for that road.



This is the reason why you may see more live traffic results at certain times of the day.

### Traffic colour descriptions

If available in your area, real-time traffic conditions will be displayed over the road as colour-coded lines. The colours indicate the speed of traffic on the road compared to free-flowing conditions. For highways, the colours roughly equate to:

- Green: more than 50 miles per hour or 80 kilometres per hour
- Yellow: 25 – 50 miles per hour or 40 – 80 kilometres per hour
- Red: less than 25 miles per hour or 40 kilometres per hour
- Red/Black: very slow, stop-and-go traffic
- Grey: no data currently available

These speeds don't apply to traffic on smaller roads, such as those within cities, which have lower speed limits. For roads smaller than highways, the colours give an indication of the severity of the traffic. Green means that traffic conditions are good, yellow means fair, and red or red/black means poor traffic conditions.

# Myionu™ Portal



## Myionu™ Areas

With Myionu™ Areas it is possible to create a geographical boundaries in what size or shape that is required.

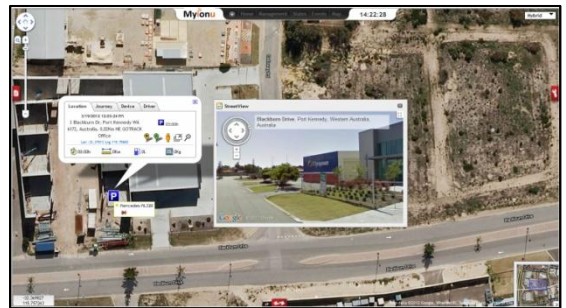
For example, a customer site or a no go area. There is no limit to the number of areas that can be created. It is also possible to create areas within areas for example a specific area within a customer site such as a loading bay.



## Automated Alerts

For added security we've included an automated alert system which can be configured by device for all or specific areas.

In the event of a device updating while in an area Myionu™ will automatically raise an alert. The alerts to also be configured to send emails to all or selected recipients, as well as generating an optional on screen audio/visual alert which can be displayed on all or selected users.



## Area Reports

Detailed reports can be generated to provide full management information relating to the which devices have been at each location. This information will include arrival and departure times along with the amount of time spent in the area.

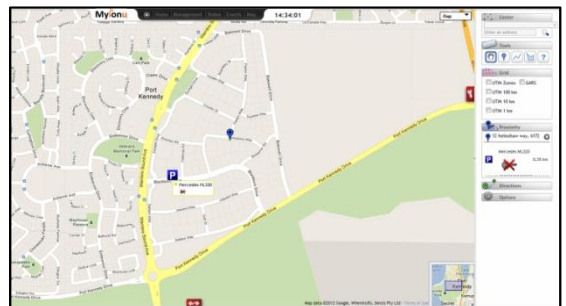
## Myionu™ Street View

Myionu™ Street View is powered by Google Maps with Street View which lets you explore places around the location of each device through 360-degree street-level imagery. The superb feature provides a better understanding of the device location and the surrounding area.

## Myionu™ Nearest Device

The Myionu™ nearest device features enables the user to quickly locate the nearest device to a chosen location.

For example, a plumbing company could see where the nearest plumber is to a customer who requires their service. The location of both the customer and the nearest plumber are displayed on the map along with the distance

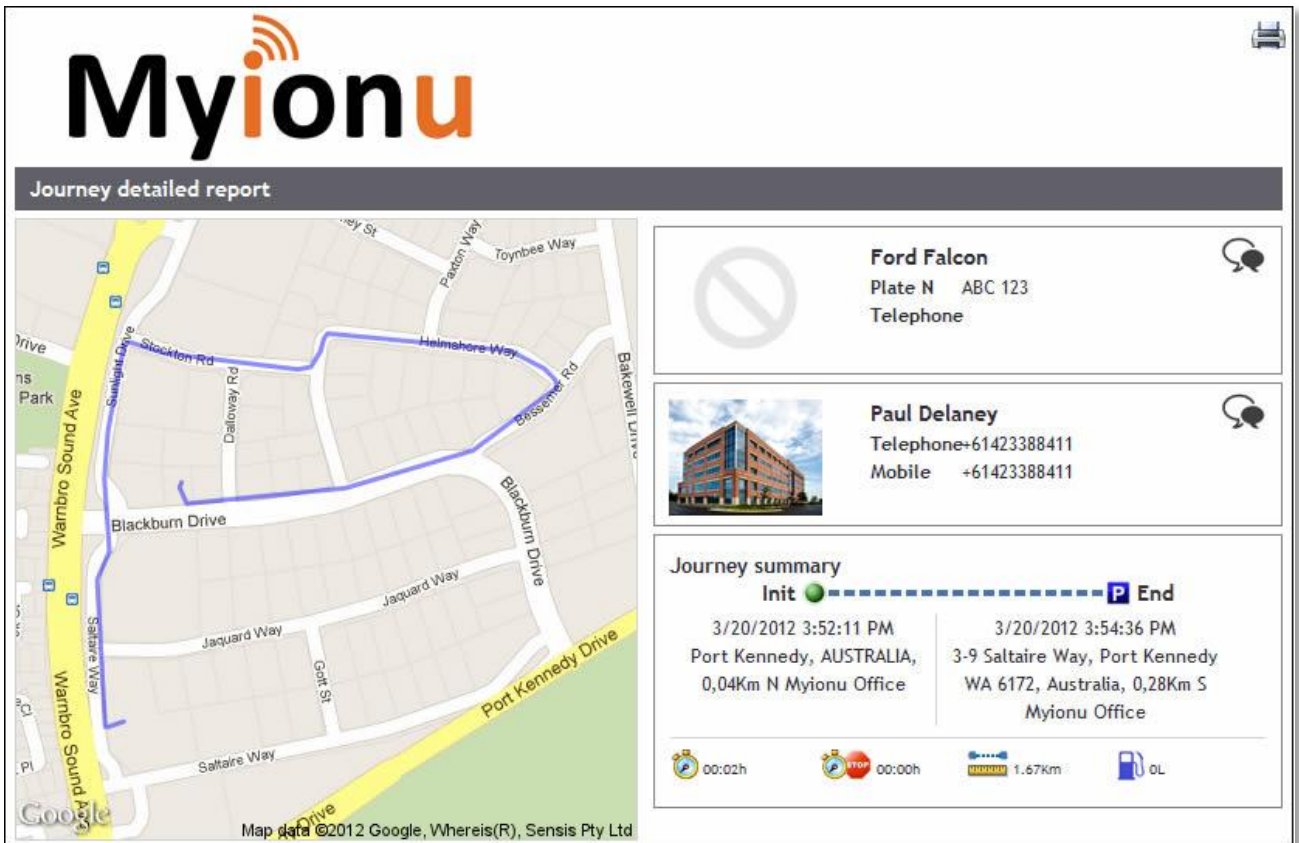


## Myionu™ Reporting

Myionu™ provides a comprehensive array of management reports to enrich any business. Most reports can be fully exported to word, excel or PDF.

## Example report – Detailed Journey Report

Myionu™ detailed journey reports produce a high level of trip information based on your plan. The report will show each trip in detail for the selected period. Information includes a map representation, along with detailed location updates as shown below.



The screenshot displays the Myionu 'Journey detailed report' interface. On the left is a map showing a blue route through a residential area with streets like Wambo Sound Ave, Blackburn Drive, and Port Kennedy Drive. On the right, there are three summary boxes: 1) Vehicle information for a 'Ford Falcon' (Plate N ABC 123). 2) Driver information for 'Paul Delaney' with contact numbers. 3) 'Journey summary' showing an 'Init' at Port Kennedy, AUSTRALIA, at 3:52:11 PM and an 'End' at 3:54:36 PM at 3-9 Saltire Way, Port Kennedy, WA 6172, Australia, 0,28Km S Myionu Office. Below the summary are icons for duration (00:02h), stop time (00:00h), distance (1.67Km), and fuel (DL).

Example trip overview header with map view

## Example report – Detailed Journey Report

The detail supplied within the report will show the start date, time and location and each update the unit makes including speed, location and distance travelled. Additional information including fuel consumption rates and Canbus data is also available (where installed). The update rate is every three minutes as standard, however this can be upgraded if required.

Date	Address	Driving T.	Stopped T.	Speed	Distance	Consumption	State	Info
3/20/2012 3:52:11 PM	Port Kennedy, AUSTRALIA, 0,04Km N Myionu Office	00:00h	00:00h	2.98Km/h	0Km	0L		
3/20/2012 3:52:14 PM	3 Blackburn Dr, Port Kennedy WA 6172, Australia, 0,03Km N Myionu Office	00:00h	00:00h	10.87Km/h	0.01Km	0L		
3/20/2012 3:52:20 PM	3 Blackburn Dr, Port Kennedy WA 6172, Australia, 0,02Km NE Myionu Office	00:00h	00:00h	21.59Km/h	0.03Km	0L		
3/20/2012 3:52:33 PM	2 Helmsore Way, Port Kennedy WA 6172, Australia, 0,22Km E Myionu Office	00:00h	00:00h	65.43Km/h	0.24Km	0L		
3/20/2012 3:52:45 PM	9 Bessemer Rd, Perth WA 6172, Australia, 0,4Km E Myionu Office	00:00h	00:00h	27.82Km/h	0.41Km	0L		
3/20/2012 3:52:56 PM	7 Bessemer Rd, Port Kennedy WA 6172, Australia, 0,52Km E Myionu Office	00:00h	00:00h	23.11Km/h	0.54Km	0L		
3/20/2012 3:52:57 PM	Port Kennedy, AUSTRALIA, 0,52Km E Myionu Office	00:00h	00:00h	22.13Km/h	0.55Km	0L		
3/20/2012 3:52:58 PM	16 Helmsore Way, Port Kennedy WA 6172, Australia, 0,52Km E Myionu Office	00:00h	00:00h	26.71Km/h	0.56Km	0L		
3/20/2012 3:53:00 PM	Port Kennedy, AUSTRALIA, 0,52Km E Myionu Office	00:00h	00:00h	37.28Km/h	0.58Km	0L		
3/20/2012 3:53:04 PM	16 Helmsore Way, Port Kennedy WA 6172, Australia, 0,48Km E Myionu Office	00:00h	00:00h	48.17Km/h	0.63Km	0L		
3/20/2012 3:53:21 PM	8 Helmsore Way, Port Kennedy WA 6172, Australia, 0,31Km NE Myionu Office	00:01h	00:00h	27.11Km/h	0.86Km	0L		

Example trip overview trip detail