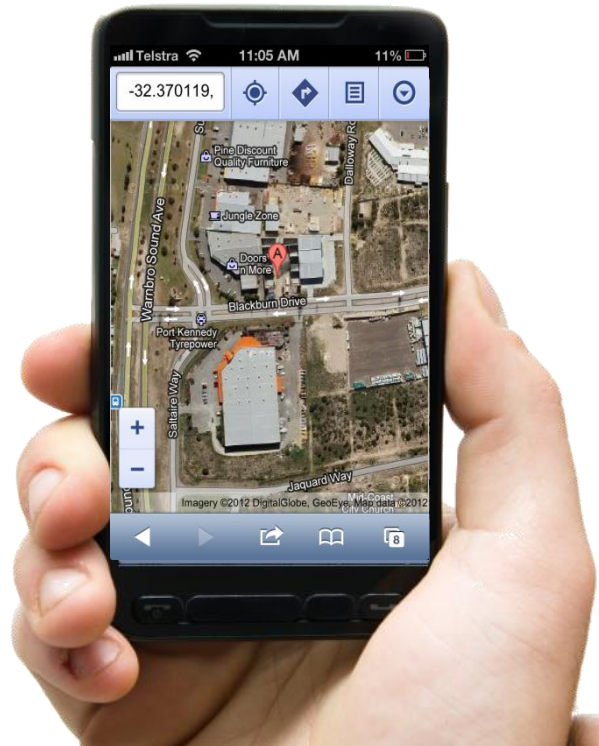


Myionu™ Asset Protector Plus Install Guide



© Myionu 2012 – A Division of AffinityOne Pty
Unit 8 / 3 Blackburn Drive Port Kennedy
Western Australia. 6172
Tel: 1300 30 22 52 Fax 1800 984 991
www.myionu.com.au

Myionu™ Asset Protector Plus Install Guide

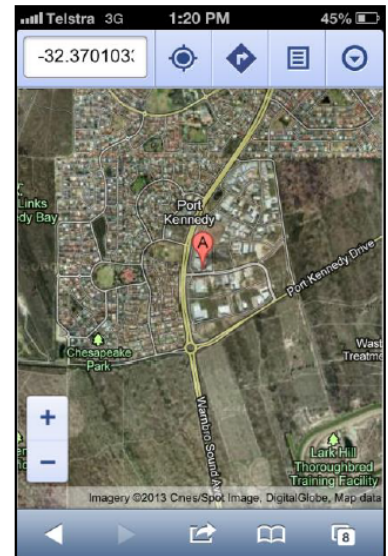
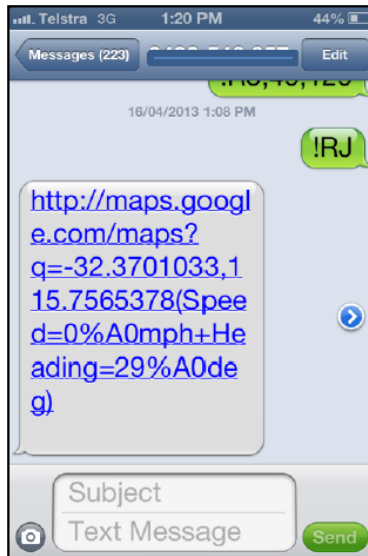


Signal Name	Description	Lead Color	Input or Output
GND	Ground	Black	Ground – Serial Cable
Vcc	Primary Power Input	Red	Power
IN-0	Ignition	White	Input
IN-1	Input 1	Blue	Input
IN-2	Input 2	Orange	Input
Out-0	Output 0	Green	Output
Out-1	Output 1	Brown	Output
Out-2	Output 2	Yellow	Output

Note: Location on Demand Users.
 Only the RED and Black cables require connection. Please ensure that these are fused with a 3 amp fuse.

Request a location.

Simply Text the message !RJ to the mobile number you are issued following activation. The device will then Text you back with location along with a hyperlink to your smartphone mapping (Google Maps)



Important Note:

- Do not dispose in fire
- Do not near fuel or explosives
- Do not open device.
- Remember your mobile number issued by SavvyTel.
- Ensure at least 1 SMS is send every six months.

For assistance call 1800 468 722 or visit myionu.com.au.

Text !RJ to device, you'll receive the location SMS and shown above. Click on hyperlink to open Google Maps as shown on the right.